



**Healthcare**



**Power**



**Water // Wastewater**

# Contents”



04 **About us**



07 **Construction**  
Water / Wastewater



12 **Construction**  
Electricity

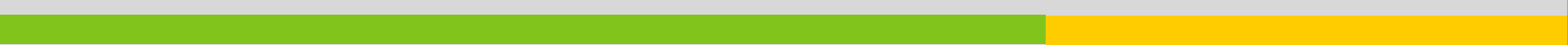


20 **Procurement**



24 **Training**

02 [www.pro-technique.com](http://www.pro-technique.com)



05 Values

06 Business Ethics

10 Construction  
Oil & Gas

14 Construction  
Healthcare

15 Engineering

26 Quality Assurance



# About us”

## 1.1 Ethics

Protechnique's company Code of Ethics seeks to ensure our company's vision of being the foremost diversified international contractor; thus, holding our company and its individuals to the highest ethical standards.

This includes:

- Acting honestly and with integrity
- Supporting the safety and wellbeing of those under our care
- Working together to achieve a shared vision

Protechnique takes a zero-tolerance approach to unethical behavior, including: conflicts of interest, bribery and corruption, receiving kickbacks and gifts, preferential treatment of third-parties, as well as harassment and bullying.

## **1.2 Values**

### **1.2.1 Integrity**

We will act honestly and with integrity. We will do what is right and behave properly, regardless of the circumstances and whether or not others will observe our actions. We will take a zero-tolerance approach to bribery and corruption. We will operate with a respect and concern for the environment, the community, and the people with whom we work; and will aim to minimize the impact of our activities.

### **1.2.2 Safety**

We will not compromise in providing our employees and others under our care with a safe and healthy working environment. We will ensure that we send everyone home safely at the end of each working day, and will make our safety performance a competitive advantage.

### **1.2.3 Success**

We will operate a commercially successful business. Success to us means providing strong returns for our shareholders and consistently delivering quality projects for satisfied clients. Our “can-do” approach will enable us to develop long-term, mutually beneficial relationships, and become a partner of choice.

### **1.2.4 Teamwork**

We are one team, and we recognize that our success is only possible through the collaborative efforts of our people. We will develop our people through training, reward performance, and create a working environment in which our people are challenged, motivated, satisfied and accountable for their work.







# Construction ”

## **2.1 Water / Wastewater**

Protechnique is capable of providing turnkey solutions for a variety of water, sewer, and civil infrastructure projects, with established divisions specializing in heavy construction, water and wastewater treatment, pumping stations, transmission, and distribution.

While speed and accuracy are our hallmarks, safety remains our top priority. Most of our supervisory staff receive OSHA/NEBOSH certification and continuous training to keep current with upgrades in equipment and changes to rules and regulations. Formal safety audits are performed as part of every project. Treatment plants, pumping stations in addition to transmission pipeline are our core of strength in delivering high end environmental aspects.

### **2.1.1 Treatment Plants**

Our construction expertise in water, sewer and desalinization treatment plants helps us understand the world's water needs of tomorrow, and

work towards meeting them today. With a team of licensed professional engineers, we have the ability to design and build innovative custom solutions, as well as integrate standardized units and designs. We combine these capabilities with a wide range of technology and equipment resources, and continually work to help communities meet their water and wastewater treatment needs in the most efficient and cost effective way possible.

Services:

- Specialty Municipal Construction
- General Construction
- Process Piping Systems
- Construction Management
- Design / Build

### **2.1.2 Pumping Stations**

Protechnique constructs, installs, and maintains high service pump stations for any water and wastewater management need. Whether it's lifting potable water to a reservoir for eventual distribution to the community, or pumping treated and sanitized wastewater back to the environment, we work to ensure that all client's regulations and customer requirements are met at each stage of delivery. With a continual commitment to safety and environmental stewardship, Protechnique pump station construction ensures the reliable delivery of clean water and the safe, effective removal of potentially harmful wastewater and sewage

Services:

- Specialty Municipal Construction
- General Construction
- Storm Sewer Pump Stations
- Potable Water Pump Stations
- Vacuum Pump Stations
- Sewer Lift Stations
- Construction Management
- Design / Build

### **2.1.3 Pipeline**

From intricate 4-inch water distribution pipeline, to vast 108-inch transmission mains, Protechnique pipeline expertise allows us to move water and wastewater with the highest levels of reliability, safety and efficiency. We take a teamwork-oriented approach to each project, coordinating with municipalities and government organizations wherever necessary, and thoroughly analyze



treatment requirements prior to development. Our skilled, multi-disciplinary staff puts our capabilities, systems and equipment to work for those requirements, and delivers high-quality, effective, and environmentally sound pipeline solutions for projects across the world

Services:

- Water and Force Main Installations
- Vacuum Collection Systems
- Storm Drainage Systems
- Underground Utility Construction
- Specialty Municipal Construction
- Construction Management
- Design / Build

Protechnique   
constructs, installs,  
and maintains high  
service pump stations  
for any water and  
wastewater  
management need.





## 2.2 Oil and Gas

Protechnique provides oil and gas development services, from initial concept and feasibility studies all through project delivery, and operations and maintenance in the downstream process. Our oil and gas group provides a complete consulting, engineering and project management platform; integrating cost-effective solutions into site operations, infrastructure development, and procurement and construction services. Our focus is to maintain a high level of flexibility and client-focus to deliver effective, tailored solutions to the oil and gas market.

### 2.2.1 Process Engineering

We know how important it is to correctly complete process design to avoid scope changes, and then execute accordingly. We have the technical capability and systems to plan ahead in alignment with the client's stated goals. When dealing with existing assets, we work closely with operations, maintenance, and process staff on site to develop the process design basis, prepare scoping studies for expansion projects, conduct plant troubleshooting and develop optimization and debottlenecking alternatives.

For new business opportunities we develop process flow diagrams and heat and material balances. We set up and run economic models, and prepare high-level capital and operating cost estimates to identify operating risks and support contract negotiations.

Protechnique's highly skilled engineers have a unique blend of

theoretical knowledge and practical operating experience, combined with excellent communication skills. Our rigorous analysis of technologies allows us to provide valuable feedback on areas of risk, and how to modify designs to improve operability and reliability. Our aim is to develop long-term relationships with our clients, and we customize our services to complement the resources of the client's team to collaboratively achieve success.

Services:

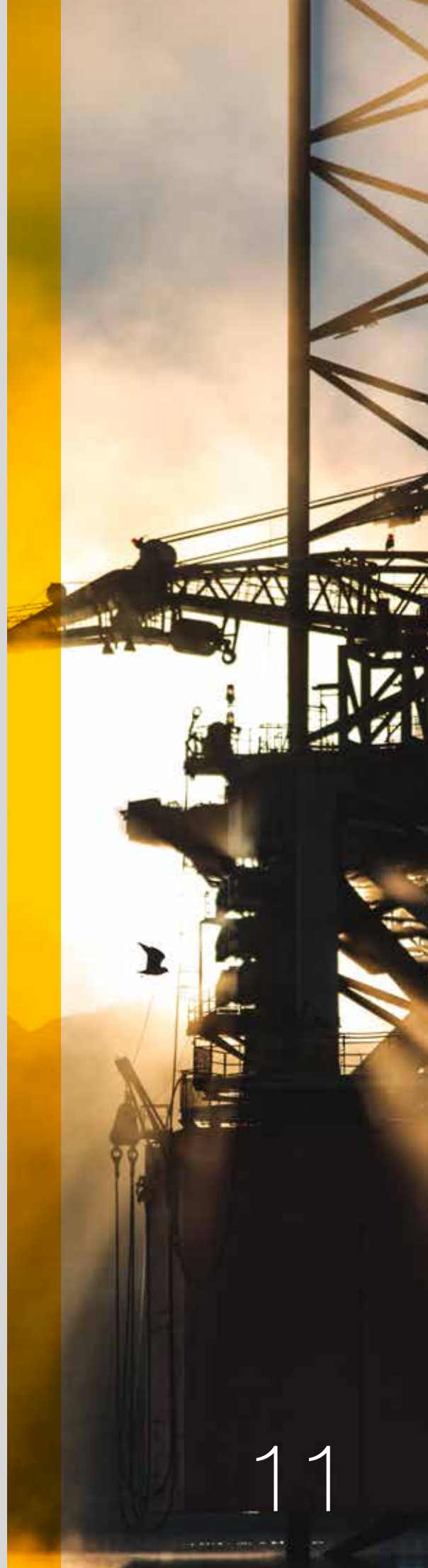
- Engineering
- Optimization
- Site Assessment

### **2.2.2 Oil and Gas Facilities Installation, Testing and Commissioning**

Commissioning and start-up is the final step before production runs in a processing plant. Protechnique is uniquely poised to perform commissioning and start-up, and the accompanying trouble-shooting and problem solving activities, whether as part of a design/build project or as a final step in an ongoing project.

Services:

- Commissioning & start-up preparation
- Piping check-out
- Mechanical completion audits
- Electrical & instrumentation calibration & check-out
- Equipment trouble-shooting
- System sterility



## 2.3 Electricity

As a reputable electric transmission and distribution company, Protechnique is an EPC contractor and constructs efficient and reliable power plants and electrical transmission and distribution systems. Our extensive workforce allows us to effectively meet our clients' needs for electrical transmission and distribution, emergency restoration and ongoing maintenance. We've been involved in some of the most challenging and recognizable electric transmission and distribution projects in the industry. Our experienced managers and crews consistently deliver electrical transmission and distribution services with an unfailing commitment to safety, emergency restoration, and environmental concerns. We are effectively engaged in the Transmission and Distribution Systems to deliver constant power supply to our clients.

### 2.3.1 Transmission Systems

Protechnique efficiently constructs and installs quality end-to-end electrical transmission and distribution systems. From remote rural locations to busy downtown streets, our crews deliver overhead and underground electrical transmission and distribution services in even the most challenging terrains and circumstances. Our experience has given us a deep understanding of the unique characteristics and hazards of high-voltage power line operations. We work closely with our clients (and their partners) to ensure the highest levels of safety, overall environmental stewardship, and the proper energizing of each project. We offer a broad range of turnkey services for the transmission market; including engineering, procurement, construction, commissioning and program and project management services for new transmission installation, as well as operations and maintenance services for line/substation facilities.

Services:

- Commissioning
- Engineering, Procurement and Construction Services
- Operations and Maintenance
- Program and Project Management

### 2.3.2 Distribution System

Protechnique has constructed and maintained quality and reliable overhead and underground distribution systems for municipalities, rural cooperatives, and electric-utility companies. We construct, expand, restore, and maintain every aspect of distribution systems. Our crews rigorously plan and safely execute every detail of the job, coordinating with required government agencies and affected



neighborhoods as needed. We work with companies, cooperatives, and municipalities to successfully manage all phases of substation and switchyard construction

We follow rigorous safety requirements and industry standards on every job, and continually work to minimize time and resources for the good of our clients, as well as the good of our clients' clients. Our experienced teams utilize cutting-edge technologies and deep industry knowledge to design specifications and drawings, schedule projects, manage quality control, and ultimately ensure the safety and success of each project we take on.

Services:

- Design - Conventional and gas insulated
- Civil Construction - Site preparation, demolition, and foundations
- Structural Construction or Re-Build - AC/DC Converter Stations
- Equipment Installation - Transformer installation, circuit switches and breakers, capacitor banks and reactors, switchgear, and bus systems

## 2.4 Healthcare

In the complex world of healthcare, it is the fundamentals that drive successful project delivery: experience, teamwork, communication and genuine care.

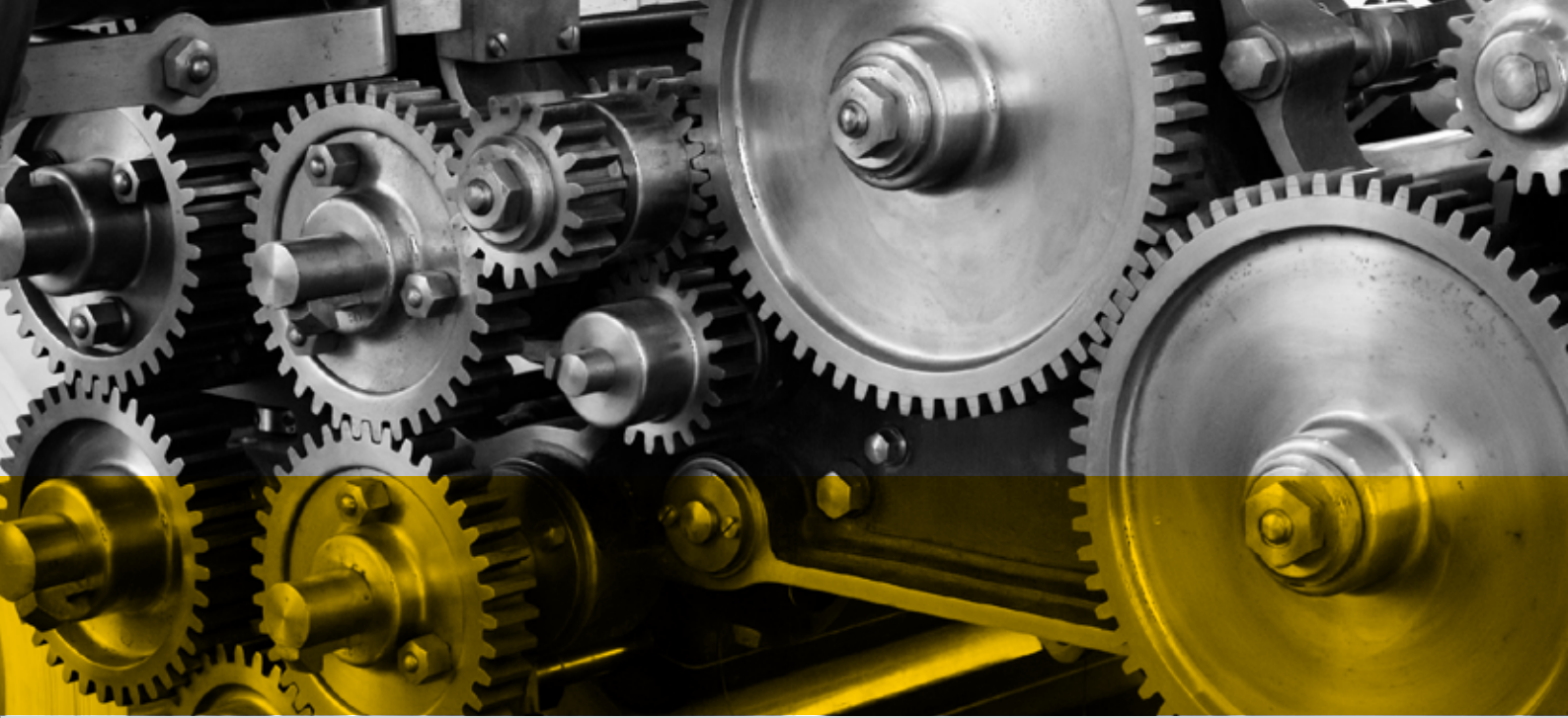
Protechnique has completed several healthcare construction projects; ranging from miscellaneous repairs to new medical centers and assisted living facilities. Our proven industry experts understand the unique needs and applications of the intricate systems that are the lifeline of healthcare facilities. We closely track the industry's ever-changing regulatory requirements and continuously perfect our skills, keeping abreast of the latest standards, systems and interfaces building a solid foundation for quality care and hospital construction.

Trust and open communication are the foundation of every project. Issues always arise, but it is how those items are handled and communicated that makes all the difference. At Protechnique, we put our experience and expertise to work to create new processes and offer practical solutions, along with pricing and schedule impacts, for timely and informed decision-making. This is what it means to be part of a collaborative team working together to develop methods and find solutions to ensure project success.

Services:

- Commissioning
- Engineering, Procurement and Construction Services
- Operations and Maintenance
- Program and Project Management
- Equipment Selection
- Healthcare Planning
- Installation, Testing and Commissioning





# Engineering”

Our capabilities extend through all stages of the project, from conception to completion. PE capabilities include: prefeasibility and feasibility studies, field investigations, laboratory testing, computer modelling, design, engineering, preparation of tender and contract documents, tender evaluation, contract management, construction supervision, quality assurance, asset management, commissioning, operation and maintenance, training and overall project management

We cover engineering services in the sectors below:

- Environment
- Water and Wastewater
- Power – Distribution and Transmission
- Healthcare
- Oil and Gas

Our capabilities  
extend through all  
stages of the project.





### 3.1 Project Identification and Feasibility

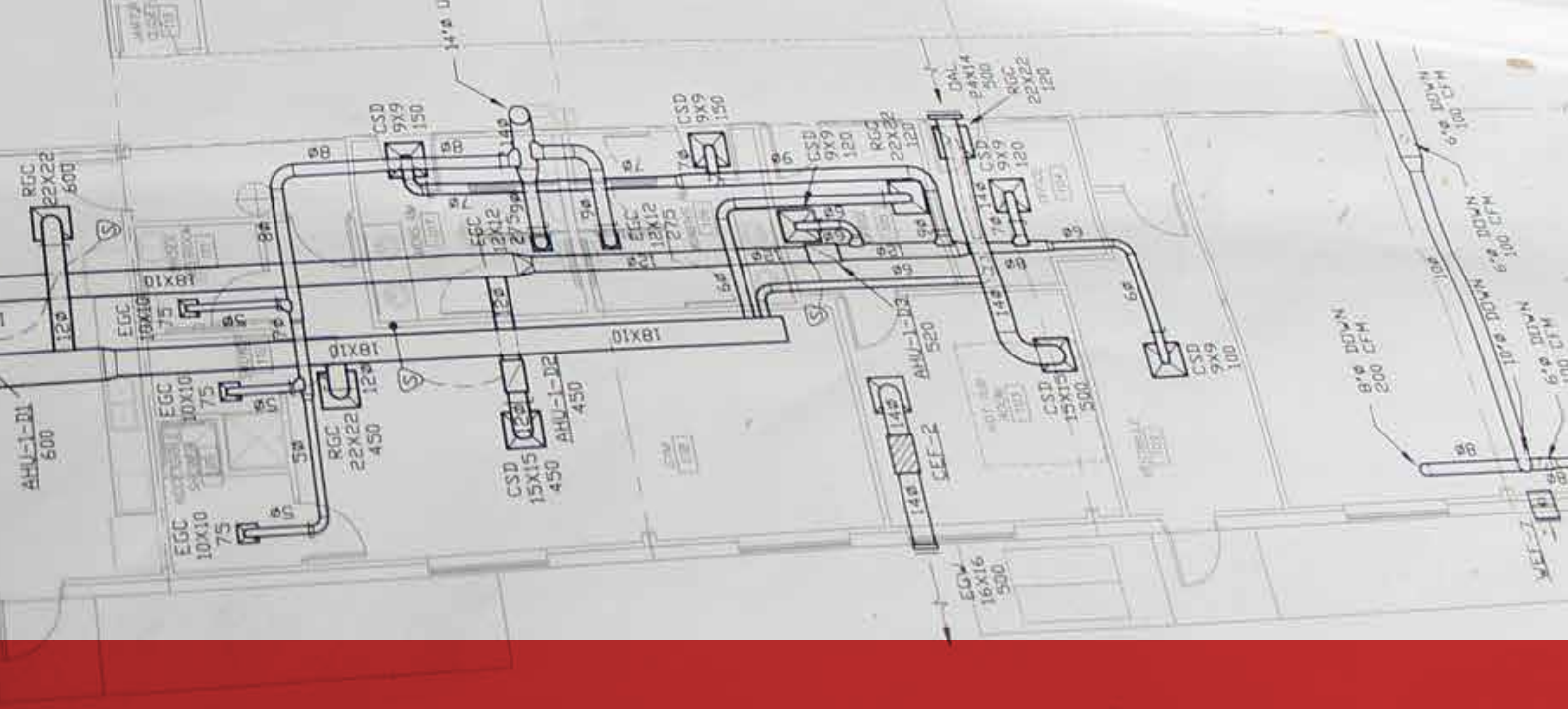
Protechnique assesses each new project from the client's perspective, and always with the client's goals in mind. We do this through extensive consultation and analysis. Whether it is a proposed project or an existing facility, the company's multidisciplinary professionals draw on vast experience in the private and public sectors to provide sound advice and support at the crucial analysis stage. Capabilities include:

- Project identification studies
- Feasibility studies
- Appraisal of potential sites
- Geotechnical investigations
- Hydrological investigations
- Environmental studies
- Preliminary layouts and designs
- Preliminary implementation programs
- Preliminary cost estimates
- Cash flow forecasts
- Financing arrangements
- Risk assessment
- Government, commercial and community liaison

### 3.2 Design

We believe that good design begins with a thorough understanding of the client's goals, expectations and requirements. We combine good, innovative design with the practicalities of technology and an





understanding of its potential application. Capabilities include:

- Concept design
- Detailed design
- State-of-the-art visualization
- Modelling
- Environmental, operational and aesthetic review
- Landscape design
- Interior design

### 3.3 Planning

We gained extensive experience in both strategic and statutory planning through projects for various private and public sector clients. We can manage the planning process from the 'front end' strategic stage of a project, all through to statutory delivery. Our planners ensure that clients receive timely approvals and well-researched planning advice. Capabilities include:

- Structure planning
- Planning scheme amendments
- New community master plans
- Development plans
- Strategic analysis and research
- Planning permit approvals
- Archaeological and heritage sites
- Urban design guidelines and costs
- Developer contribution assessments
- Community engagement facilitation



### **3.4 Survey**

Spatial information is the crucial link supporting all disciplines required for successful project delivery. Our in-house resources and seamless field-to-office systems ensure that vital information is at the client's fingertips when needed. Our survey and spatial capabilities include:

- Property boundary surveys
- Data capture, analysis and management
- 3D visualization
- Digital terrain modelling
- Lease surveys
- Structural surveillance
- Mining operation surveys
- Longline route surveys
- Airport navigation surveys
- Hydrographic surveys
- Advice on building envelopes, restrictions and easements

### **3.5 Project Delivery**

We can manage projects from conception to completion using the company's multidisciplinary and comprehensive professional services. Increasingly, clients require easy-to-tender and handle packaged deals that include: concept development, design, project management, project finance, project documentation, construction, engineering, procurement and operation. No matter the complexity, location or

challenges, Protechnique has the experience and expertise to deliver projects on time and within budget. Capabilities include:

- Detailed layouts, designs and specifications
- Tender documentation
- Tender evaluation
- Construction supervision
- Contract management
- Project management

### **3.6 Operation and Maintenance**

We offer full operation and maintenance services for all project types and sizes, in addition to plant management services for public and private sector organizations. Our maintenance management services maximize the productivity and capability of the asset by providing a balance between performance and safety. Our services also increase efficiency and output and reduce overheads. Capabilities include:

- Operational assessments
- Development of institutional strengthening programs
- Introduction of improved strategies, policies and practices
- Transfer of knowledge and skills
- Provision of technical assistance
- Maintenance assessment and auditing
- Materials management

We can manage projects from conception to completion using the company's multidisciplinary and comprehensive professional services.





# Procurement ”

Our services include one or a combination of the following:

- Contracts services
- Global Procurement Services
- Procurement Management
- Subcontracts services
- Supply Chain Management

## **4.1 Contracts services**

In a constantly changing business environment, Protechnique manages subcontracted activities that are an essential part of the Engineering, Procurement and Construction (EPC) process; through an experienced team of professionals and managers. Our central communications and IT systems use business intelligence to streamline all subcontracted activities while providing 24/7 global support to our clients.

Our scalable system is designed to enforce industry-wide best practices and enable standardization, organization, security, and collaboration in all activities pertaining to medium-to-large-scale initiatives.

Contractors and subcontract administrators learn to use the system easily, as it is customizable with role-based and task-based application. Protechnique thus achieves consistency, quality, safety and ethical practices all through the supply chain. The system also yields valuable data for reports in the areas of:

- Prequalification and vetting
- Contract authoring
- Contract inquiry
- Post award administration

## 4.2 Global Procurement Services

Protechnique has trusted sources through global alliances to procure a range of goods and services at competitive prices from all over the globe. We aim to deliver excellent product quality combined with the most favorable logistics solutions to save time and money. From low-risk purchase processes and systems to reduced cost of labor and delivery, our clients receive excellent support for all their project requirements.

We have the flexibility to adjust for individual project requirements, project size and workload to achieve cost savings for our clients. Our tracking services provide transparency in our processes and our clients can be confident in high performance standards, reliability and efficiency all through the procurement process.



## 4.3 Procurement Management

Protechnique offers one-stop Procurement Management solutions through its wide network of trusted global and local business alliances. The company uses the latest innovations in technology to achieve efficiency and process control in acquisition, operations and delivery, all through the procure to pay processes.

Our services include:

- Basic procurement planning
- Inquiries
- Quotation analysis
- Vendor identification, evaluation and selection
- Subcontracting and purchasing
- Scheduling
- Packaging and shipping
- Customs clearance and import/export formalities

Protechnique follows international norms and best practices in freight payment and audit. We conduct vendor-by-vendor and product-by-product analyses to understand our clients' unique procurement cultures and deliver tailor-made solutions.

### **Procurement planning and process management**

Protechnique provides process solutions through innovative contract management and control. We manage purchase orders and subcontracts effectively and add value to procurement management at every stage. Our efficiency benefits you through increased profitability all through the supply chain. We help you reduce overheads and save costs with our advanced planning, scheduling, group buying, negotiated bulk buying and just-in time-delivery services; which reflect in better prices for your end customers.

### **Group buying**

Our group buying results in substantial savings of time and cost, particularly in large public sector companies where the same item may be bought for different departments spread over different locations. We work closely with our clients to achieve single-point indenting, procurement, billing and transportation management, resulting in time and cost savings. The delivery dates, quantities and conditions are listed in the purchase order.



### **Just-in-time delivery**

We combine just-in-time delivery with group buying. Under this model, the cost of storage is carried by the supplier, who is responsible for ensuring that the purchased goods, in required quantities, are ready and available for delivery at the specified dates and times. Protechnique's procurement process planning and just-in-time delivery services keep storage costs down, resulting in cost savings and enhanced efficiency in materials movement and supply.

### **4.4 Subcontracts services**

In a constantly changing business environment, Protechnique manages subcontracted activities that are an essential part of the Engineering, Procurement and Construction (EPC) process, through an experienced team of professionals and managers.

Our central communications and IT systems use business intelligence to streamline all subcontracted activities while providing 24/7 global support to our clients. Our scalable system is designed to enforce industry-wide best practices and enables standardization, organization, security, and collaboration in all activities pertaining to medium-to-large-scale initiatives. Contractors and subcontract administrators learn to use the system easily as it is customizable with role-based and task-based application. Protechnique thus achieves consistency, quality, safety and ethical practices all through the supply chain.

The system also yields valuable data for reports in the areas of

- Prequalification and vetting
- Contract authoring
- Contract inquiry
- Post award administration

## 4.5 Supply Chain Management

Protechnique coordinates logistics, transportation and delivery services all through the supply chain process through our business alliances with global freight forwarders and third-party logistics providers; using trusted transportation companies, and leading airlines and cargo carriers.

We provide door-to-door, time-bound transportation and freight management services for your just-in-time needs, even in challenging locations and tough weather conditions. Our focus is on timeliness and accuracy in materials delivery, through quality assurance with vendors to minimize delays and errors. Our containerized service does not limit the size and weight of products to be transported.

Our clients' goods are tracked through their journey until delivery and installation, using the latest supply chain technology. We ensure safe and efficient handling and storage of goods at insured warehouses that stand the test of weather. This makes it possible for clients to outsource their inventory management and focus on their core business activity.

## Training”

Through its subsidiary UniHouse, Protechnique provides technical training and capacity building in several areas. Today's professionals are required to have multiple skills – from communicating with a multi-cultural workforce to managing a complex project, or learning new technologies to enhance efficiency. With its excellent track record of professional development, UniHouse helps working professionals in different industries to upgrade their skills, achieve higher personal and organizational standards, meet the challenges of change and deal effectively with global competition.

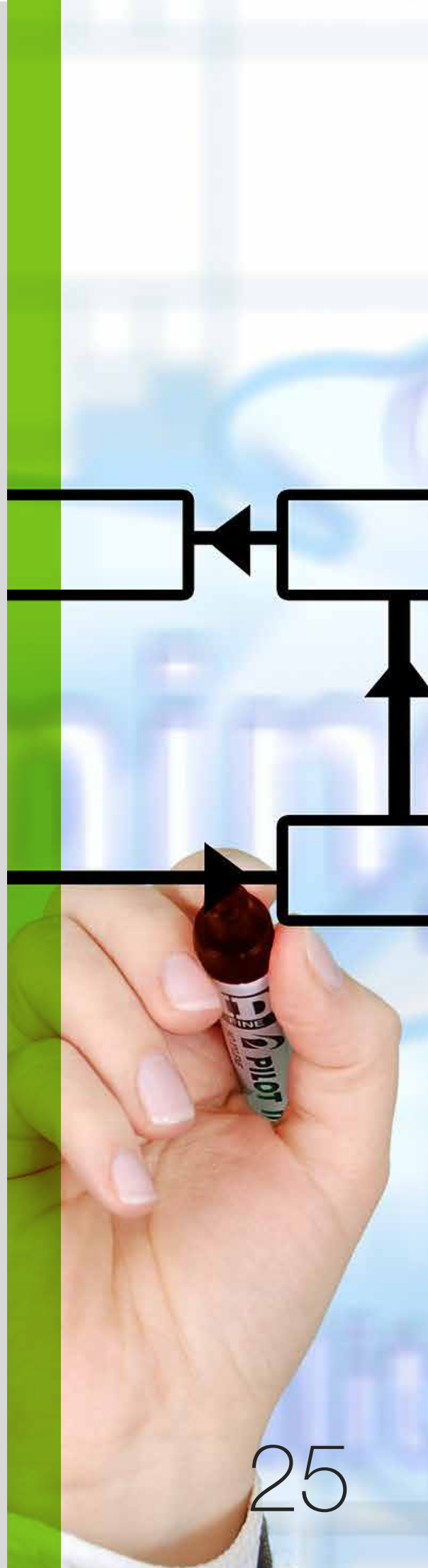
Throughout our global partnering with universities and consultants, we provide specific technical training in different areas including: Process and Chemical Engineering, Safety Health and Environment, Technical and Executive Training, Project and Contract Management, Information Technology and Soft Skills. Technical Training aims to develop human



resources, social and legal frameworks, partnerships and organizations that nurture change, solve problems, enable efficiency and growth and add value to the communities they serve.



We provide  specific technical training in different areas.



# Quality Assurance”

## **6.1 ISO 18001:2004 - Occupational Health and Safety (OH&S) Policy**

The Occupational Health and Safety of Protechnique's employees is a prime concern for us. We are committed to reducing health and safety hazards by ensuring safe work practices and applying technology for sustainable development.

We aim to achieve this goal by:

- Implementing a formal Occupational Health and Safety Management System in accordance with OHSAS 18000:2008.
- Ensuring that it is appropriate to the nature and scale of the organization's OHSAS risks.
- Following safe work practices, preventing injury and ill health, and continually improving the effectiveness of the system.
- Complying with applicable legal and other requirements, as well as taking any additional measures considered necessary.
- Outlining and setting OH&S objectives, targets and programs, and monitoring and reviewing the objectives to improve performance.
- Documenting procedures and instructions that are required to implement and maintain the OH&S Policy.
- Communicating to all personnel working under the control of the organization with the intention that they are made aware of their individual OH&S obligations.
- Making the OH&S policy available to all interested parties (within the organization, clients, contractors, government bodies and public).
- Outlining the training and competence required to prevent occupational hazards.
- Carrying out periodic reviews of the policy to ensure that it remains relevant and appropriate to the organization.

## **6.2 ISO 14001:2004 – Environmental Policy**

The Environmental Policy of the company is to conduct its business in a manner that conserves the environment and minimizes pollution. We accept our

responsibility to limit and mitigate any potential adverse impact of our operations on the environment. This is achieved outlined below: Implementing a formal Environmental Management System (EMS) in line with ISO 14001:2004.

- Ensuring that it is appropriate to the nature, scale and environmental impacts of its activities, products and services.
- Committing to the prevention of pollution, and continual improvement of EMS.
- Complying with applicable environmental legal requirements and other environmental related requirements.
- Providing the framework for setting and reviewing environmental objectives and targets.
- Documenting the policy, procedures and instructions that are required to implement and maintain the Environmental Policy.
- Communicating to all personnel working under the control of the organization with the intention that they are made aware of their individual EMS obligations.
- Making the Environmental Policy available to all interested parties - within the organization and to clients, contractors, government bodies and the public.
- Outlining the training and competence required to achieve conformance to the Environmental Management System.
- Carrying out periodic reviews of the policy to ensure that it remains relevant and appropriate to the organization.

### **6.3 ISO 9001:2008 – Management Policy**

Protechnique Ltd. is an ISO 9001:2008 quality approved company for the scope below:

- Design and Project Management Services: covering electrical, mechanical and construction engineering, healthcare, water, power and IT.
- Supply Chain Management Services: including procurement and selection of medical, electrical, water, mechanical, and IT equipment.

Our systems are certified by an external auditor as meeting the international quality standard - ISO 9001. Our clients are assured that we are continually working towards improving our services.



protechnique

---

## United Kingdom

Office 207  
Piccadilly House, 49 Piccadilly,  
M1 2AP, Manchester  
Tel: +44-74267635694

## Turkey

Enibosna Merkez Mahallesi 29 Ekim Cad.  
Vizyonpark Sit. D Blok Ofis-B1  
Apt. No: 5/506 Bahçelievler/Istanbul  
Tel: +90 537 386 39 88

## Iraq

Nearby to Basra International Airport,  
Al-Toba Wa Al-Nakheel,  
AbuSkhair. Al-Basrah 61028. Iraq  
E-mail: [info@pro-technique.com](mailto:info@pro-technique.com)  
Tel: +964-7733338688

## Korea

New Guro Digital Complex,  
Guro 2-dong, Guro-gu,  
Seoul, Republic of Korea,  
Tel: +82-10-8968-0009

## Jordan

Queen Rania Street, Complex No.371  
2nd Floor, Office No. 201  
P.O.Box 2704 Amman, 11941 Jordan  
Tel: +962-6-5348610